

Tabernash Lodge in Windsor, CO 80550



General Specifications

- Price** \$0
- Finished Area** 1,667 sqft.
- Total Area** 2,424 sqft.
- Bedrooms** 3
- Bathrooms** 2 1/2
- Garage** 3-car
- Basement** full, unfinished
- Exterior** Stone/wood
- Contemp.** 2 Story
- Schools** Windsor RE-4

Located in Peakview Estates

Peakview Estates is located on the east side of Windsor, close to numerous recreational opportunities including the Pelican Lakes Golf Course and Eastman Park, and it is only 10 minutes from the new hospital and lifestyle mall at 25/34. Poudre Heights is close to the growing employment corridor along U.S. 34, which includes employers such as ConAgra, Poudre Valley Health Care System, State Farm Insurance, and the new Owens-Illinois bottling plant. Peakview Estates is loaded with open space, which is spread out around the entire subdivision. A paved walking trail runs along the North edge of the community. It also has a 15.5-acre park and future elementary school site. Phase two of the community will have an 8 acre lake that will be provide a non-potable water system for irrigation.



Please contact the builder for more information

Zachariah Satrang * 970.686.6861 * info@ZTSHomes.com
Destiny Masters * 970.686.6861 * info@ZTSHomes.com



Living room
Alder spindle railing
Gas fireplace



2nd floor landing overlooks living room
Alder spindle railing
Window between kitchen and living room



View of living room from kitchen
Gas fireplace
Built in alder cabinets



View of living room from 2nd floor
Gas fireplace
Built in alder cabinets

Please contact the builder for more information

Zachariah Satrang * 970.686.6861 * info@ZTSHomes.com

Destiny Masters * 970.686.6861 * info@ZTSHomes.com



Dining room
Backyard patio access



Kitchen
Kitchen adjacent to dining room



Dining room
Convenient access to kitchen



Kitchen
Stainless steel appliances
wrap-around counters

Please contact the builder for more information

Zachariah Satrang * 970.686.6861 * info@ZTSHomes.com

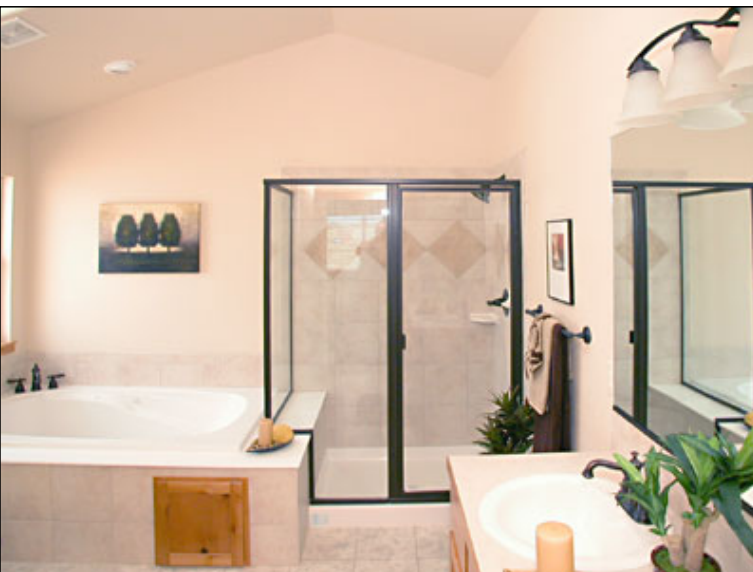
Destiny Masters * 970.686.6861 * info@ZTSHomes.com



2nd floor master bedroom
Ceiling fan



Master bathroom
Shower



Master bathroom
Jetted tub
Shower



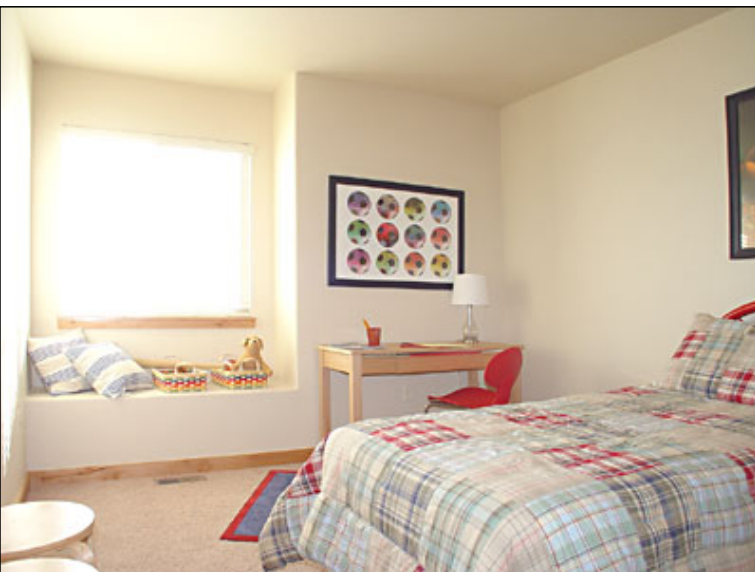
Master bedroom
Vaulted ceilings



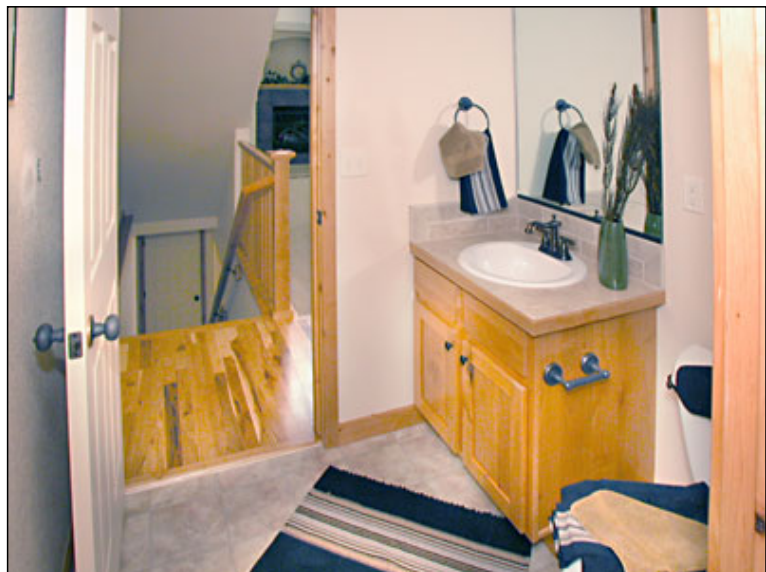
Bedroom #1
Built-in window seat



Full bathroom #1
His and Hers sinks

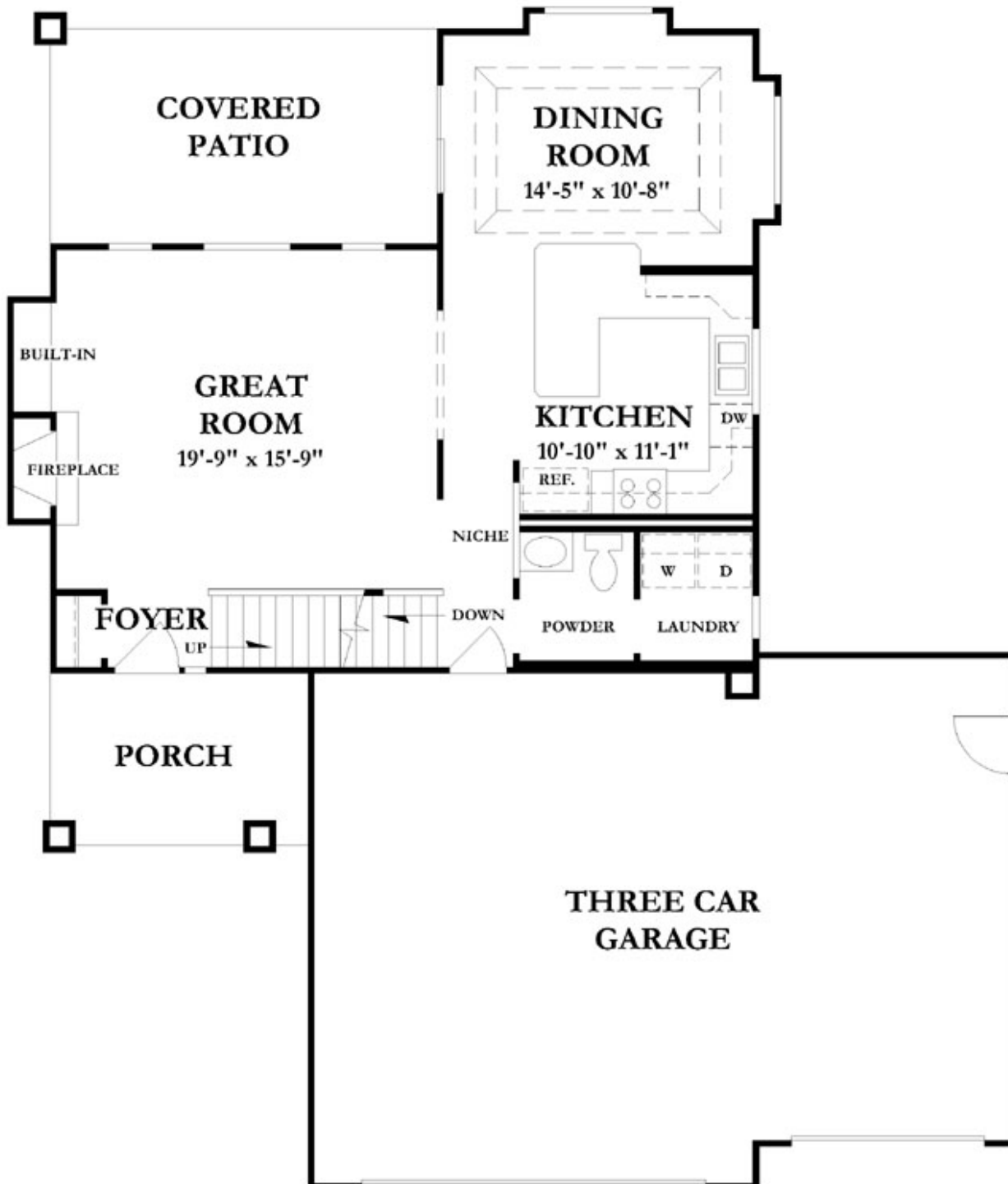


Bedroom #2
Built-in window seat



2nd floor bathroom

Tabernash (main level)

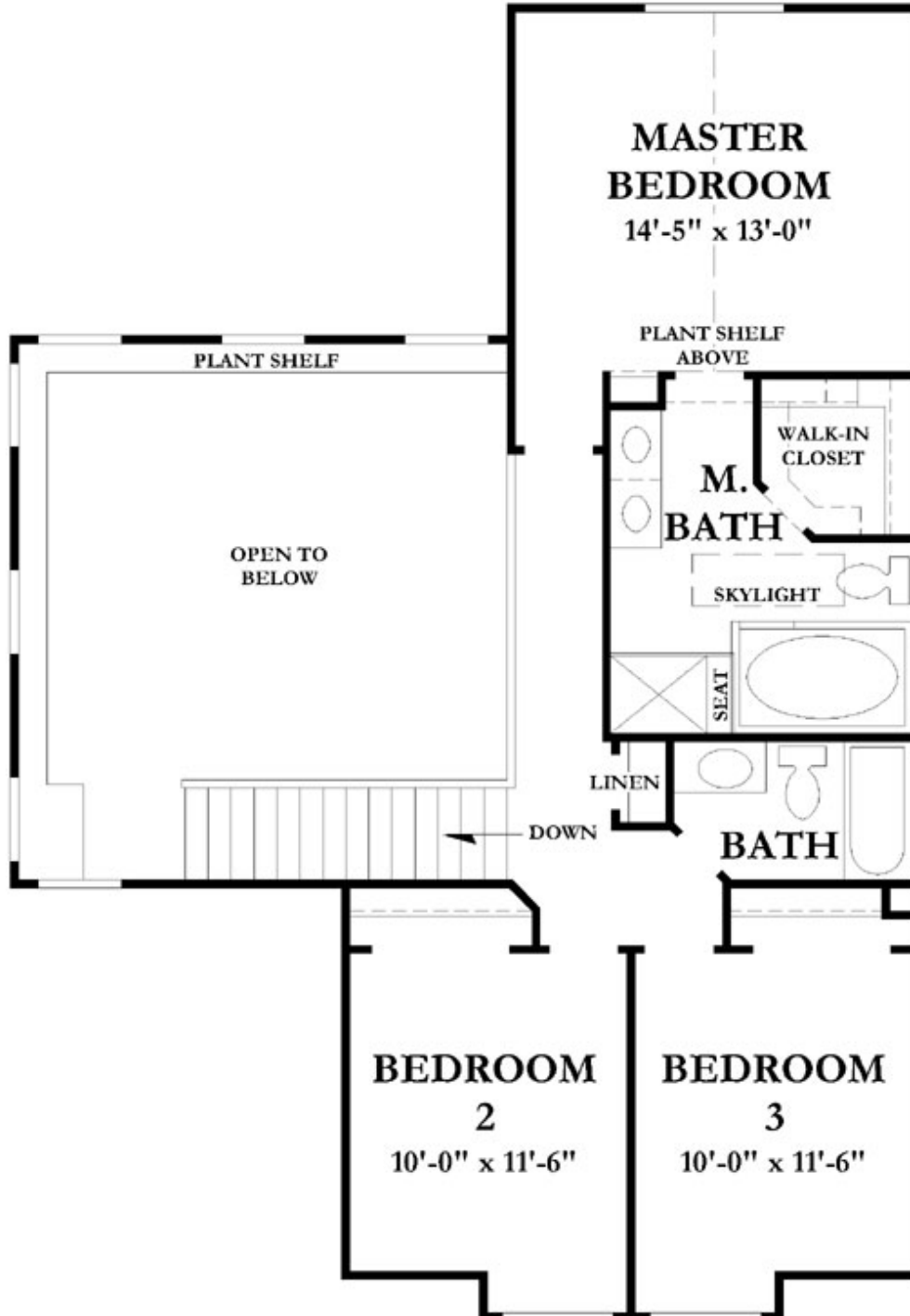


Please contact the builder for more information

Zachariah Satrang * 970.686.6861 * info@ZTSHomes.com

Destiny Masters * 970.686.6861 * info@ZTSHomes.com

Tabernash (upper level)



Please contact the builder for more information

Zachariah Satrang * 970.686.6861 * info@ZTSHomes.com

Destiny Masters * 970.686.6861 * info@ZTSHomes.com