



# Tabernash Lodge in Windsor, CO 80550

Please contact the builder for more information

Zachariah Satrang - 970.686.6861 - info@ZTSHomes.com

Destiny Masters - 970.686.6861 - info@ZTSHomes.com



## Located in Peakview Estates

Peakview Estates is located on the east side of Windsor, close to numerous recreational opportunities including the Pelican Lakes Golf Course and Eastman Park, and it is only 10 minutes from the new hospital and lifestyle mall at 25/34. Poudre Heights is close to the growing employment corridor along U.S. 34, which includes employers such as ConAgra, Poudre Valley Health Care System, State Farm Insurance, and the new Owens-Illinois bottling plant. Peakview Estates is loaded with open space, which is spread out around the entire subdivision. A paved walking trail runs along the North edge of the community. It also has a 15.5-acre park and future elementary school site. Phase two of the community will have an 8 acre lake that will be provide a non-potable water system for irrigation.

## General Specifications

- Price** \$0
- Finished Area** 1,667 sqft.
- Total Area** 2,424 sqft.
- Bedrooms** 3
- Bathrooms** 2 1/2
- Garage** 3-car
- Basement** full, unfinished
- Exterior** Stone/wood
- Contemp.** 2 Story
- Schools** Windsor RE-4

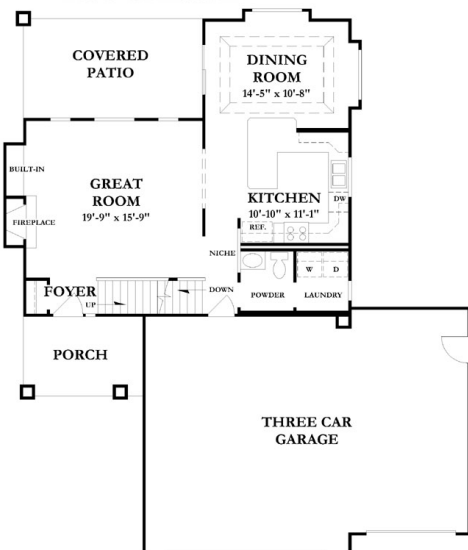
## School Information

- Windsor RE-4 School District (K-12)  
1020 West Main Street - (970) 686-8000  
[www.windsor.k12.co.us](http://www.windsor.k12.co.us)
- Tozer Ele. School (K-2)  
501 Oak St. - (970) 686-8400  
[www.windsor.k12.co.us/Tozer.htm](http://www.windsor.k12.co.us/Tozer.htm)
- Mountain View Ele. School (3-5)  
810 3rd St. - (970) 686-8300  
[www.windsor.k12.co.us/Mountain.htm](http://www.windsor.k12.co.us/Mountain.htm)
- Windsor Middle School (6-8)  
900 West Main St. - (970) 686-8200  
[www.windsor.k12.co.us/wms.htm](http://www.windsor.k12.co.us/wms.htm)
- Windsor High School (9-12)  
1100 Main St. - (970) 686-8100  
[www.windsor.k12.co.us/whs.htm](http://www.windsor.k12.co.us/whs.htm)

## Special Features of this Home

- \*Cathedral/vaulted ceilings
- \*Open floor plan
- \*Gas fireplace
- \*Hickory flooring
- \*Stain/natural trim
- \*Upgraded carpeting
- \*Alder spindle railing
- \*Separate dining room
- \*Eat-in kitchen
- \*Raised panel alder cabinetry
- \*Stainless steel appliances
- \*Electric range
- \*Electric self-cleaning oven
- \*Dishwasher
- \*Microwave
- \*Plant shelf
- \*Central air conditioning
- \*Whole house humidifier
- \*Forced air heating
- \*2 ceiling fans
- \*2 water heaters
- \*Main floor laundry
- \*Washer/dryer hookups
- \*Walk-in master closet
- \*Garage door opener
- \*3-car garage
- \*Covered front porch
- \*8' x 12' front porch
- \*Full unfinished basement
- \*Built-in entertainment area

## Tabernash (main level)



## Tabernash (upper level)

